
Nova Scotia Utility and Review Board

IN THE MATTER OF

*The Maritime Link Act, S.N.S 2012 c.9
and the
Maritime Link Cost Recovery Process Regulation, N.S. Reg. 189/2012*

NSPML Quarterly Report Q2 2017

June 16, 2017

Table of Contents

1.0 Introduction..... 3

2.0 Update of Project Schedule with Variance Explanation..... 4

 2.1 Gates and Milestones 4

 2.2 Safety..... 4

 2.3 Commercial Activities..... 5

 2.3.1 Land Access Agreements..... 10

 2.3.2 Funding 10

 2.3.3 Joint Development Agreements 10

 2.4 Engineering Activities..... 11

 2.5 Submarine Cables (Marine) 13

 2.6 Converters and Substations 14

 2.7 Construction Contractor(s) – Transmission Lines 16

 2.8 Granite Canal Accommodations Operations..... 19

 2.9 Grounding Sites..... 19

 2.10 Independent Engineer..... 20

3.0 Updated Cost Summary 21

4.0 Cost Flow 24

1 **1.0 INTRODUCTION**

2

3 This is the Q2 2017 Quarterly Report for the Maritime Link as directed by the Utility
4 and Review Board (UARB) where the UARB ordered in its Supplemental Decision:

5

6 [115]....detailed reports must be filed by NSPML on a semi-
7 annual basis, on June 15 and December 15 each year. The reports
8 shall commence December 15, 2013. Updated status reports must
9 be filed quarterly.

1 **2.0 UPDATE OF PROJECT SCHEDULE WITH VARIANCE EXPLANATION**

2
3 As per Enerco U-31, sections 1.1, 1.2, and 1.3, this section provides an update on the
4 project schedule, along with a variance explanation and general status updates.
5

6 Please refer to Attachment 1 for the Level 1 Project Schedule, and Attachment 2 for
7 the Detailed Project Schedule.
8

9 Nalcor's schedule for the transmission assets remains mid-2018 and the completion of
10 Muskrat Falls is forecast for late 2019 to mid-2020. NSPML will also provide future
11 updates as Nalcor advances toward completion of the Muskrat Falls project, the first
12 of which is anticipated later in June 2017.
13

14 **2.1 Gates and Milestones**

15
16 The Project remains scheduled for energization in October of this year and for
17 commissioning by the end of Q4 2017. The Maritime Link is expected to be in-
18 service by January 1, 2018. NSPML is now planning for Decision Gate 4, at which
19 point the Maritime Link will be turned over to Operations.
20

21 **2.2 Safety**

22
23 The project review of high risk activities for new upcoming field activities by
24 contractors continues to be followed. Marine safety reviews were a priority with the
25 arrival of the cable lay vessel, the Skagerrak, and prior to the cable pull-in at Cape
26 Ray, the cable laying, and the final pull-in at Point Aconi. Other reviews were
27 conducted with the Polar King vessel crew prior to the start of the trenching and
28 survey activities. Further reviews were conducted prior to the start of the cable load
29 onto Barge UR141 and the lift onto the HLV vessel in Japan for the transportation to
30 Nova Scotia. Safety reviews were conducted in advance of the Transmission Line
31 steel tower erection program with the assistance of the heavy load helicopter. Other
32 safety reviews were conducted prior to the installation of the equipment for the

1 substations, converter building and yards, and other sites. Specific focus was on the
2 Lock-Out, Tag-Out and Permit to Work procedures which are subject to an audit
3 review and were enhanced prior to the start of commissioning testing in the substation
4 yards. These reviews are in addition to the other safety activities carried out each day
5 such as the tool box safety discussions with each crew and the Field Level Risk
6 Assessments (FLRAs).

7
8 Most recently, transmission line construction contractor Rokstad Power informed
9 NSPML that one of the recently constructed steel towers located along the HVdc
10 portion of the Maritime Link Project in western Newfoundland fell down as a result
11 of a suspected failed guy wire system at the site. No injuries occurred and no one was
12 onsite at the time of the incident.

13
14 Occupational Health & Safety (OH&S) has been notified and Rokstad together with
15 NSPML have started a review to determine the cause of this incident. Work related to
16 this incident on the high voltage direct current (HVdc) line has been temporarily
17 suspended, under orders of OHS, while this review continues.

18
19
20 The safety of the public and the workers continues to be Emera NL's first priority,
21 and NSPML remains committed to a culture on the work sites that promotes world
22 class safety behaviours.

23 **2.3 Commercial Activities**

24
25 The key major procurement activities are presented in Table 1 with an update of the
26 status for each initiative.

1
2
3**Table 1**

Commercial Activity	Status in April 2016	Initiative Number	Status in June 2017
HVdc Submarine Cable Supply and Installation	The Contract was awarded to Nexans in January 2014.	E11-18	No Change.
Converter stations, switchyards and related structures (“converters and structures”)	The Contract was awarded to ABB Inc. in June 2014.	E12-74	No Change.
Right of Way Clearing along Transmission Lines	Contracts were awarded to Majors Logging Limited in NL and R. MacLean Forestry in NS in February 2014. Contract closeouts were in progress.	E13-88	E13-88 is closed.
Transmission Structures and Grillages	The Contract was awarded to Kalpataru Power Transmission Ltd. in September 2014 for design and delivery of Structures and Grillages.	E13-85	No Change.
Site Preparation Services (Includes construction of access road upgrades)	The Contract was awarded to JonelJim Concrete Construction (1994) Ltd. for NS Site Preparation Services in September 2014. The Contracts were awarded to Marine Contractors Inc., MCI	E13-92	The JonelJim contract closeout remains in progress. The contract closeout with MCI is complete.

Commercial Activity	Status in April 2016	Initiative Number	Status in June 2017
	<p>Limited Partnership for NL Site Preparation Services in September 2014.</p> <p>Contract closeouts were in progress.</p>		
Transmission Line Construction	<p>E13-95 contract has been terminated.</p> <p>This contract has been replaced with E16-284 and E16-269 as reported in the previous report.</p>	E13-95	No Change
Transmission Line Construction – NL AC Line	The contract with PowerTel was re-assigned to NSPML for the completion of the two Grounding Lines and the HVac Line.	E16-284	No Change.
Transmission Line Construction - NL and NS HVdc Lines	The contract for the construction of the HVdc Transmission Lines was awarded to a joint venture of Emera Utility Services and Rokstad Power Corporation (ERJV).	E16-269	No Change.
Transmission Line Conductors	<p>The Contract for the supply of conductors was awarded to Midal Cables in March 2015.</p> <p>Contract close-out was in progress.</p> <p>The contract for the supply of OPGW was awarded to Composite Power Group Inc. in</p>	E13-87	<p>The contract close-out remains in progress.</p> <p>The contract close-out</p>

Commercial Activity	Status in April 2016	Initiative Number	Status in June 2017
	<p>June 2015.</p> <p>This is also within the scope of the E13-87 initiative.</p> <p>Contract close-out was in progress.</p>		<p>remains in progress.</p>
<p>Horizontal Directional Drill (HDD) Construction Program</p>	<p>Contract awarded to Directional Horizontal Drilling (DHD) in January 2016.</p> <p>E13-157 was divided into two contracts.</p> <p>E13-157 A was awarded to Schlumberger in March 2016 for the supply of HDD fluids. E13-157B was awarded to Baker Hughes in April 2016 for the Supply of directional drilling services, drill bits and other materials. This contract has been closed.</p> <p>E13-158 for marine intervention services was awarded in April 2016 to DOF Marine. This contract has been closed.</p> <p>The supply of the HDD casing (E15-238) was awarded to East Coast Tubulars Limited in October</p>	<p>E13-156</p> <p>E13-157</p> <p>E13-158</p> <p>E15-238</p>	<p>E13-157 is closed.</p> <p>E13-158 is closed.</p> <p>E15-238 is closed.</p>

Commercial Activity	Status in April 2016	Initiative Number	Status in June 2017
	<p>2015. This contract has been closed.</p> <p>The closeout of all HDD construction contracts were in progress. This contract has been closed.</p>		
Accommodations Operations	The contract for the accommodations operations services was awarded to East Coast Catering in April 2015.	E13-89	The contract was extended in June, 2017

1

1 **2.3.1 Land Access Agreements**

2

3 In NS, all UARB expropriation hearings have been successfully resolved through
4 negotiated agreements. In NL, there continues to be only three outstanding disputed
5 expropriations. The process for hearing expropriation disputes rests with an
6 arbitration panel established by the government, and NSPML has worked with the
7 Chair of the panel and the NL Government for process and rules to enable hearings in
8 NL. NSPML has also filed applications for dormant expropriated parcels in NL; these
9 applications will be uncontested. Similar to NS, these applications are about fair
10 compensation valuation; land control has been obtained for the expropriated parcels.

11

12 **2.3.2 Funding**

13

14 As in prior months, Funding and Drawdown Requests containing comprehensive
15 details of costs for the upcoming month were submitted to the Collateral Agent and
16 Government of Canada as necessary, and all requested funds were received on
17 schedule. Please refer to Attachment 3 for the Independent Engineer (IE) Draw
18 Confirmation Certificates for the period. The IE Certificates allow for Project costs to
19 be paid from the proceeds of the ML Construction Loan under the payment terms of
20 the Material Project Documents and the ML Credit Agreement.

21

22 **2.3.3 Joint Development Agreements**

23

24 NSPML continues to work with Nalcor and NS Power to finalize the remaining
25 operational agreements arising from the Formal Agreements with Nalcor. Please refer
26 to Attachment 4 for details on the status of these Agreements.

1 **2.4 Engineering Activities**

2
3 Commissioning of the Maritime Link continues to align with the completion target
4 date of Q4 2017. Engineering is captured in three main categories across several Work
5 Breakdown Structures (“WBS’s”):
6

7 • HVdc Submarine Cable Supply and Installation - cable design and manufacturing
8 was engineered by the cable supplier and includes performance criteria consistent
9 with service life and reliability targets as approved by NSPML. Both subsea cables
10 have now been completely manufactured and successfully passed all testing
11 requirements. Other preparations and inspections of marine cable loadout and
12 transportation from Futtsu, Japan and Halden Norway, and the planning for
13 trenching and rock protection were completed. Engineering expertise was aboard
14 the vessel Skagerrak during the laying of the first cable in April and May 2017,
15 and the laying of the second cable which is underway in June 2017. Engineering
16 was involved during the transpooling of the second cable from the heavy lift vessel
17 (“HLV”) and the barge UR141 to the Skagerrak. Engineering was also aboard the
18 Polar King, overseeing the cable trenching and survey activities and will continue
19 during the rock protection activities later in the summer. Engineering design for
20 the foundation for the spare cable turntable was completed along with the
21 fabrication and installation of the storage carousel. Engineering is also available to
22 support the land work activities at Point Aconi and Cape Ray with regards to
23 installation of land cables and transition compounds where the cables will connect
24 to the overhead transmission lines. This work commenced in early March and is
25 forecasted to be completed in August.

26
27 • HVdc Converters and Substations - engineering is included in the contract awarded
28 to ABB for the supply and installation of these assets. With construction activities
29 well underway at all sites, engineering is focused on site-related changes resulting
30 from interfaces with existing equipment, and final protection and control as current
31 systems are being modified to accept the new system. The remaining priorities
32 include the completion of the main circuit studies and the Plant Circuit Diagrams

1 (PCD), and test plan documentation. Engineering is overseeing the AC substation
2 system and subsystem tests in advance of the utility outages which began in early
3 June.

- 4
- 5 • Overland Transmission - designs for the transmission and grounding lines are
6 complete and in-field modifications resulting from the contractor related as-found
7 geotechnical issues at each structure are ongoing.

8



Woodbine Converter Building

9
10

1 **2.5 Submarine Cables (Marine)**

2

3 At Halden, Norway, cable manufacturing was completed in early March, followed by
4 the successful Factory Acceptance Tests and loadout to the vessel. The Skagerrak
5 arrived in NL and installation of the first cable began on April 26, 2017 and was
6 completed on May 13, 2017. The Polar King completed the trenching and survey for
7 the first cable, and trenching and surveys are currently in process for the second cable.
8 Prior to the vessels departing Canadian waters, a full inspection and final positioning
9 of the cables within the corridor will be completed, including repairs for any identified
10 non-compliances, splicing and testing of cables as required upon completion of
11 installation. These activities are expected to be completed by early summer and the
12 remaining at-sea work will be rock placement in specified locations for cable
13 protection where burial depths were not attainable.

14

15 At Futtsu, Japan, cable manufacturing was completed in late February, followed by
16 successful Factory Acceptance Tests and loadout to the vessel. The HLV which was
17 transporting the cable barge, arrived in Nova Scotia on May 12, 2017. Transpooling of
18 this cable began and was complete on May 30, 2017. The Skagerrak then moved to
19 Cape Ray, to begin installation of the second cable.



20



Submarine cable pulled into shore in Cape Ray

1



The HLV entering the Panama Canal

2

3

4 The manufacturing of the land cable was completed as reported previously and has
5 been shipped to NL and NS. Installations of the land cables connecting the subsea
6 cables to the transition sites were completed in May and June 2017 and are forecasted
7 to be terminated in July and August 2017. The installation of the land cable at the
8 Woodbine site was completed in early June and terminations are scheduled to be
9 completed in August 2017.

10

11

12 **2.6 Converters and Substations**

13

14 ABB reports overall progress project to date to the end of April 2017 at 88.1% against
15 a target of 94.5%. ABB and NSPML are reviewing schedule details for the
16 energization plans and Substantial Completion with the first scheduled outages in June
17 being on target after having recovered ground on schedule challenges in this work.

18

1 At Bottom Brook, work at the HVDC Converter building continued throughout the
2 period. Installation of the interior and exterior panels was completed in April. Duct
3 work progressed to 56% complete and cable trays are approximately 86% complete.
4 The electrical mechanical installation in the DC yard is approximately 27% complete.
5 Rooms in the building were prepared and the installation of power electronic
6 components and other equipment is in progress. The installation of equipment in the
7 AC substation is near completion in advance of the NLH outages. Pre-commissioning
8 of the AC substation advanced and test results documentation was submitted to NLH
9 prior to the first scheduled outage which began on June 6, 2017.

10
11 At Woodbine, the status of the Converter building is similar to the Bottom Brook
12 building noted above. Installation of the interior and exterior panels has been
13 completed. Duct work progressed to 78% complete and cable trays are approximately
14 77% complete. Rooms in the building were prepared and the installation of power
15 electronic components and other equipment is in progress. The installation of the
16 electrical mechanical installation in the DC yard progressed. The installation of
17 equipment in the AC substation is near completion in advance of the NS Power
18 outages. Pre-commissioning of the AC substation advanced and test results
19 documentation was submitted to NS Power prior to the first scheduled outage which
20 began on June 3, 2017. Both Woodbine and Bottom Brook sites remain under schedule
21 pressure resulting from prior activities such as the delay due to siding; however, ABB
22 and NSPML are working collaboratively to systematically schedule in-service
23 activities to achieve commissioning dates as scheduled.

24
25 At Granite Canal, civil works is complete and substation installation is approximately
26 85% complete.

27
28 At Cape Ray, at the transition compound, work on the control building continued with
29 installation of interior trim and siding. Installation of steel supports and apparatus
30 continued to advance. Installation of equipment is near completion. Nexans continued
31 with the installation of the subsea pulling winch at the HDD pad. Work also
32 progressed with the trenching and laying of four sections of land cables.

1
2
3
4
5
6
7
8
9
10
11
12
13
14
15
16
17
18

At Point Aconi, at the transition compound, work on the grounding grid and installation of the grounding rods is now complete. Construction of the control building continued to progress. Steel erection is ongoing and equipment installation has started. Nexans continued with the installation of the subsea pulling winch at the HDD pad. The land cable trench and the laying of the two land cables up to the transition compound were completed.

2.7 Construction Contractor(s) – Transmission Lines

The status of the transmission lines construction activities at the end of the period is detailed in Table 2. All technical and environmental remedial site work will be complete for transmission activities in summer 2017 as all transmission work wraps up, including punch list items or repairs. This work will occur before contractor demobilization.

Table 2

Transmission Line	Completion Target	Status
NL Grounding Line	September 2016	The NL grounding line is complete with the exception of the connections at each end.

NL DC Transmission Line	August 2017	<p>As of April 30, 2017, this line is approximately 52 percent complete.</p> <p>Installation of foundations is at 94 percent complete, with 96 percent of towers assembled and 20 percent of towers erected. In May, the tower erection of the helicopter lift program installed approximately 180 towers in one week.</p>
NL AC Transmission Line	June 2017	<p>As of April 30, 2017 this line is approximately 86 percent complete. Work on the foundations is now 95 percent complete, with approximately 85 percent of the framing of the poles completed and 70 percent of the conductor and fibre optic overhead completed.</p>
NS Grounding Line	September 2016	<p>The NS Grounding line is complete with the exception of the connection at Woodbine.</p>

NS DC Transmission Line	June 2017	As of April 30, 2017, this line is approximately 94 percent complete. Installation of foundations increased to 100 percent complete with 100 percent of towers assembled and 100 percent of towers erected. Stringing has commenced with 77 percent complete.
-------------------------	-----------	--

1
2



3

SkyCrane transmission tower lift



Transmission stringing in Nova Scotia

1
2
3
4
5
6
7
8
9
10
11
12
13
14
15
16

2.8 Granite Canal Accommodations Operations

The contract for the operations of the Granite Canal accommodations facility (E13-89A) was awarded to East Coast Catering in April 2015, and since July 2015, has been in full operation with the camp remaining open in summer of 2017 to accommodate construction activities.

2.9 Grounding Sites

The civil construction of the grounding site at Indian Head, NL was completed in July. The installation of all electrical equipment is installed with the exception of the filter which is scheduled for installation in Q2, 2017.

The civil construction of the grounding site at Big Lorraine was completed including all the rock reef installation and site cleanup. The installation of all electrical

1 equipment is installed with the exception of the filter which is scheduled for
2 installation in Q2, 2017. The connection to the grounding line was completed in
3 January.

4
5 **2.10 Independent Engineer**

6
7 The Independent Engineer (IE) team has completed several site visits and project
8 inspections, at various stages in each province. As well, IE team members have
9 witnessed the progress at each major manufacturing facility for cables, converters and
10 transformers on multiple occasions at key stages of manufacturing. The IE completes
11 confidential reports for Canada and provides a briefing to NSPML for each inspection.
12 The IE recently completed a factory visit to the Nexans manufacturing facility in
13 Futtsu, Japan. Once received, this IE Report will be provided in a forthcoming
14 Quarterly Report.

1 **3.0 UPDATED COST SUMMARY**

2

3 As per Enerco U-31, section 2.1, the detail below outlines the DG3 forecasted costs.

4

5 Table 3 below provides an updated cost summary for the Maritime Link, which
6 includes actual costs incurred as of March 31, 2017 and forecasted costs for the
7 remainder of the Project's construction phase.

8

9 NSPML continues to track and report all costs, actual and forecast (2011-2017),
10 consistent with the methodologies used in the cost forecast represented in the ML
11 Project Application. Project costs include fully allocated costs for the entire Project
12 Management Team, including contractors, employees, executives dedicated to the
13 project, and NS Power seconded employees at affiliate mark-up rates according to the
14 Affiliate Code of Conduct. All costs provided are in Canadian dollars.

15

16 Actual AFUDC is being tracked and recorded monthly. AFUDC remains within the
17 \$230 million amount estimated at the time of filing of NSPML's Application.

18

19 The project remains on target for completion in 2017 and within the Decision Gate 3
20 budget of \$1.577 billion.

1 **Table 3**

(000's of Canadian Dollars) Description	Actual Costs					Total Project to Date	Forecast			Total Project Estimate at Completion
	2011-2013	2014	2015	2016	Q1 2017		Q2 2017	Q3 2017	Q4 2017	
Emera NL Project Management Costs	44,379	42,315	24,599	25,639	8,446	145,377	8,552	9,766	13,017	176,713
Nalcor Project Support Costs	-	15,232	425	438	15	16,111	146	104	104	16,464
Construction and Engineering Initiatives	14,975	167,980	259,750	403,871	128,727	975,303	177,134	57,309	33,924	1,243,670
Environmental Approval	2,651	4,378	1,082	1,623	450	10,184	4,286	4,476	2,433	21,379
Submarine and related	3,359	83,797	74,439	54,213	31,643	247,451	47,942	15,416	11,881	322,690
Converters, structures, and other ancillary equipment	1,517	48,747	106,195	227,643	49,566	433,668	57,575	30,116	18,738	540,097
AC and DC Transmission	7,448	31,057	78,035	120,392	47,067	283,999	67,331	7,301	872	359,504
Total	59,354	225,527	284,774	429,948	137,188	1,136,791	185,832	67,179	47,046	1,436,846
Escalation									32,454	32,454
Contingency							16,613	21,336	70,105	108,054
Grand Total	59,354	225,527	284,774	429,948	137,188	1,136,791	202,444	88,514	149,605	1,577,354

2
3
4 **Total Actual Project Costs at end of Q1, 2017 Compared to Previous Forecast**

5
6 The total actual project costs for Q1 2017 were \$10.8 million less than the costs for the
7 same period forecasted in the NSPML Quarterly Report of April 17, 2017. The
8 explanations of the variances are as follows:

- 9
- 10 • ENL Project Management and Nalcor Project Support: \$0.5 million lower cost
11 incurrence due to resourcing and administration.
 - 12
 - 13
 - 14 • Submarine and related: \$4.3 million above cost incurrence due to schedule
15 activities related to the timing of the engineering, manufacturing and transportation
16 of the submarine cables.

NSPML

1 • Converters, structures and other ancillary equipment: \$14.2 million lower cost
2 incurrence due to slower progress achieved for civil construction and installation
3 activities for the converter buildings and HVdc yards.

4

5 • AC and DC Transmission: \$0.4 million lower cost incurrence attributable to timing
6 of NL DC and AC transmission line activities.

7

8 The variances do not change the forecasted completion date of Q4 2017, and the
9 Project remains within budget.

1 **4.0 COST FLOW**

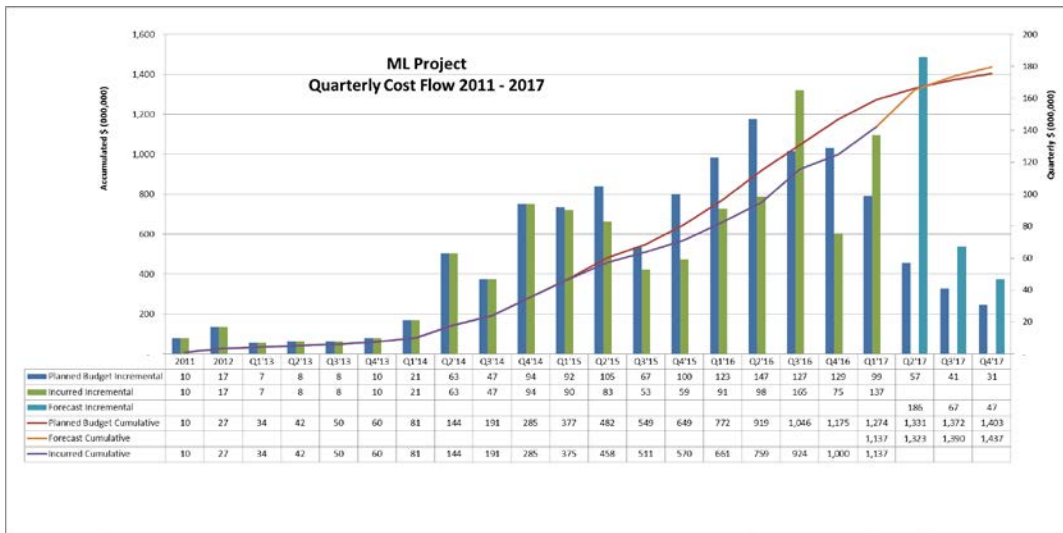
2

3 As per Enerco U-31, section 2.2, please refer to Table 4 below for the cost flow until
 4 the Maritime Link is commissioned. This cost flow for the base capital spending is
 5 now forecast at \$1.437 billion from \$ 1.431 billion and a corresponding decrease in
 6 available contingency and escalation forecasted for the remainder of the project. The
 7 total of the base capital spending, escalation, and contingency amounts remains at
 8 \$1.577 billion.

9

10 **Table 4**

11



12

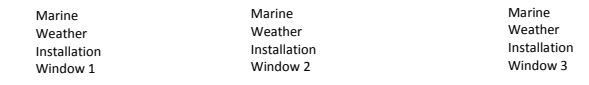
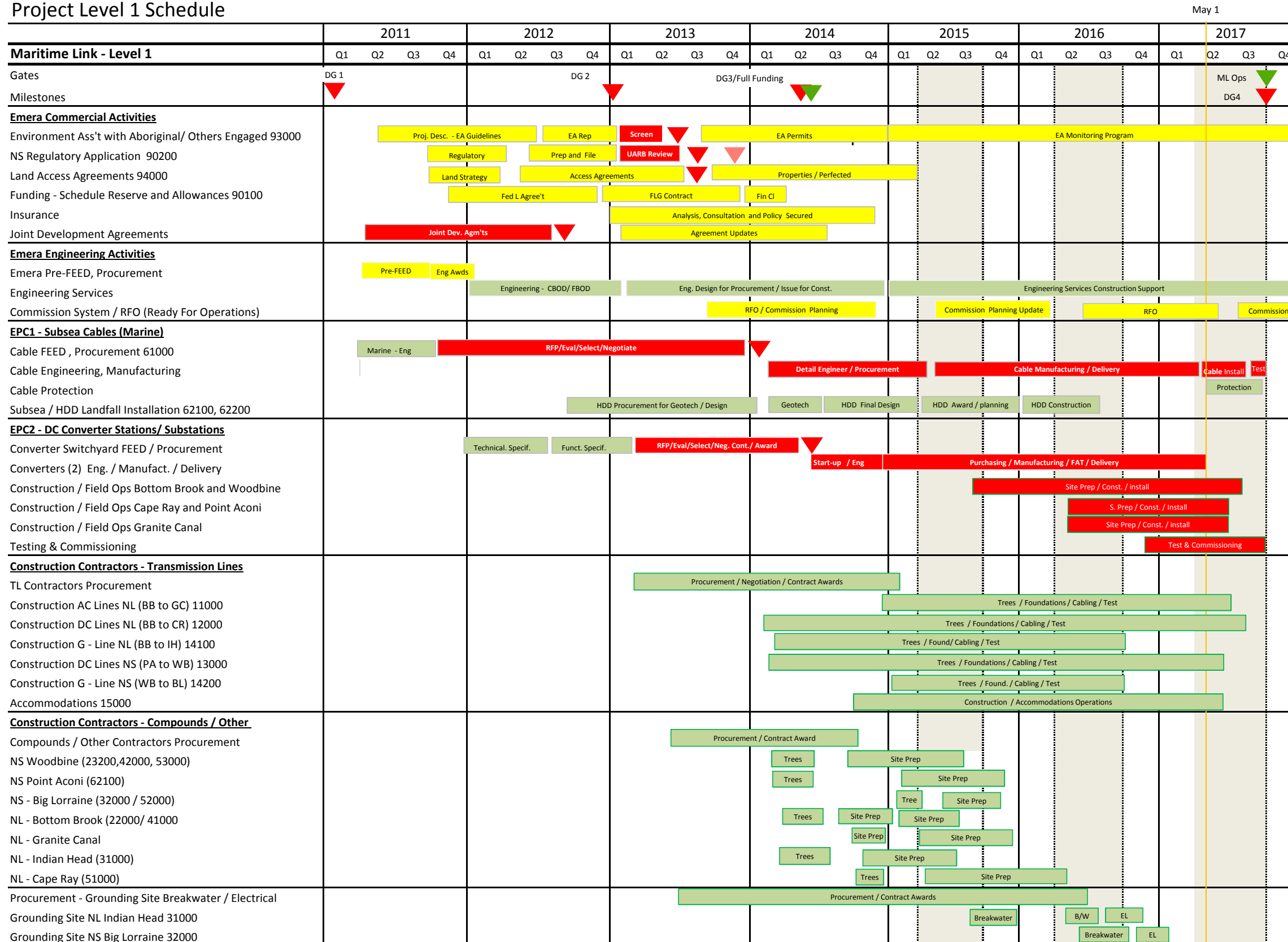
13

14

15

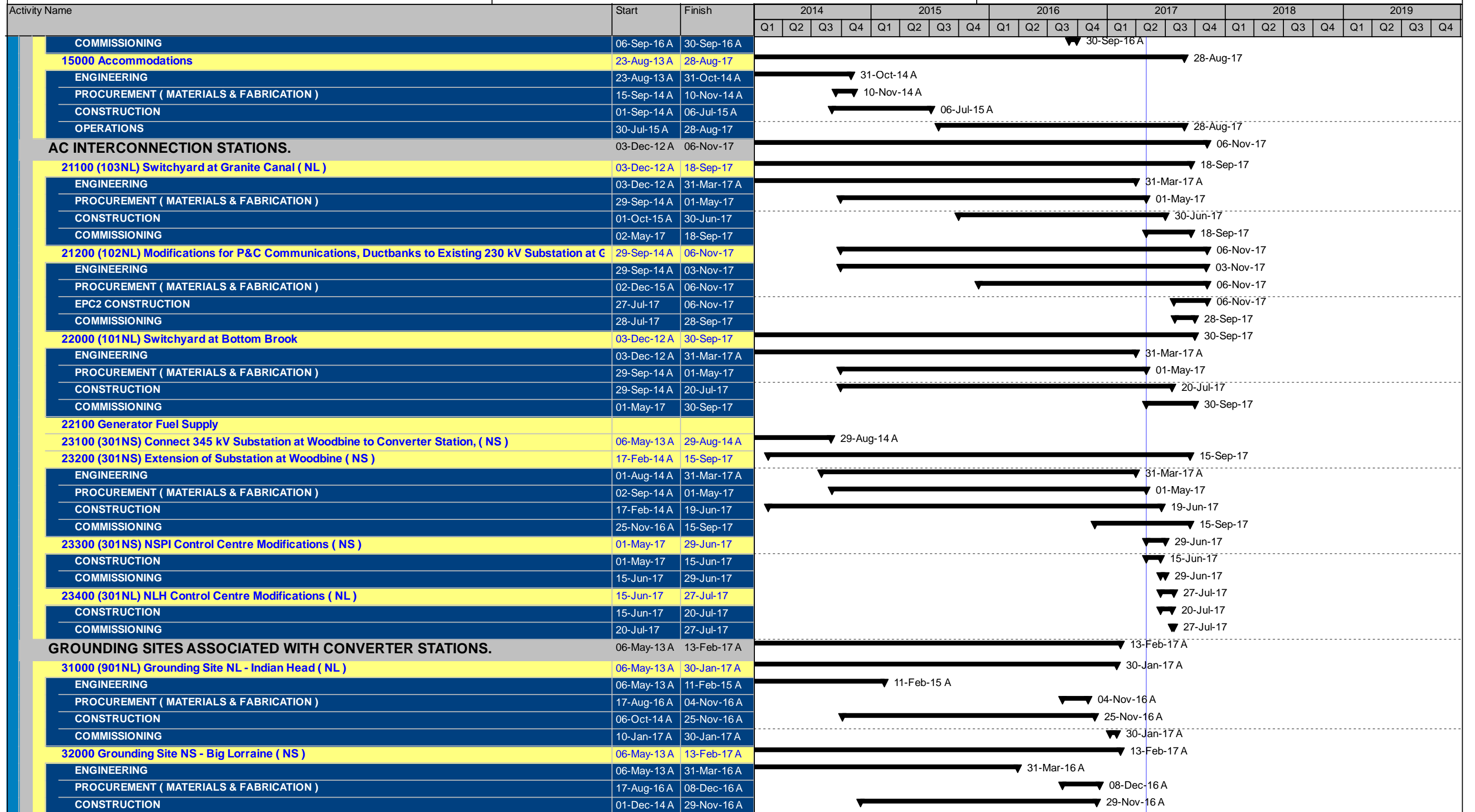
Maritime Link Project Level 1 Project Schedule

Project Level 1 Schedule



Activity Name	Start	Finish	2014				2015				2016				2017				2018				2019							
			Q1	Q2	Q3	Q4	Q1	Q2	Q3	Q4	Q1	Q2	Q3	Q4	Q1	Q2	Q3	Q4	Q1	Q2	Q3	Q4	Q1	Q2	Q3	Q4				
MLP - Schedule (DD-MAY-01-17)	01-Mar-11 A	14-Nov-17	▼ 14-Nov-17																											
GATES AND MILESTONES	01-Mar-11 A	02-Oct-17	▶ 02-Oct-17																											
Gates & Milestones.	24-Dec-12 A	29-Sep-17	▶ 29-Sep-17																											
DG2 Concept Selection		24-Dec-12 A																												
DG3 Approval to Construct		12-May-14 A	◆ DG3 Approval to Construct																											
Project Completion (Handover)		29-Sep-17																												
DG4 Approval to Operate	29-Sep-17*		◆ Project Completion (Handover) ◆ DG4 Approval to Operate																											
Milestones	01-Mar-11 A	02-Oct-17	▶ 02-Oct-17																											
Start MLP	01-Mar-11 A																													
Submit EA Report		10-Jan-13 A																												
Submit UARB Application		28-Jan-13 A																												
Environmental Assessment Approval		21-Jun-13 A	◆ Environmental Assessment Approval																											
UARB Approval		29-Nov-13 A	◆ UARB Approval																											
Marine Cable Contract Award (EPC1)		30-Jan-14 A	◆ Marine Cable Contract Award (EPC1)																											
Transmission Line Tree Clearing Start 12000 BB to CR	17-Feb-14 A		◆ Transmission Line Tree Clearing Start 12000 BB to CR																											
Converter Station Contract Signoff (EPC2) (E12-74)		30-Jun-14 A	◆ Converter Station Contract Signoff (EPC2) (E12-74)																											
Marine Cable Install Substantial Complete		22-Sep-17*																												
Commission Complete		02-Oct-17	◆ Marine Cable Install Substantial Complete ◆ Commission Complete																											
First Commercial Power		02-Oct-17	◆ First Commercial Power																											
Milestones For E12-74	02-Jul-14 A	29-Sep-17	▶ 29-Sep-17																											
OVERHEAD TRANSMISSION LINE	02-Oct-12 A	28-Aug-17	▶ 28-Aug-17																											
11000 (T23001) Overhead AC Transmission Line from Granite Canal to Bottom Brook (NL)	05-Nov-12 A	14-Jul-17	▶ 14-Jul-17																											
ENGINEERING	05-Nov-12 A	01-May-17	▶ 01-May-17																											
PROCUREMENT (MATERIALS & FABRICATION)	02-Feb-15 A	01-May-17	▶ 01-May-17																											
CONSTRUCTION	02-Jul-14 A	14-Jul-17	▶ 14-Jul-17																											
COMMISSIONING	01-May-17	22-Jun-17	▶ 22-Jun-17																											
12000 (X20005/6) Overhead HVDC Transmission Line from Bottom Brook to Cape Ray (NL)	05-Nov-12 A	17-Jul-17	▶ 17-Jul-17																											
ENGINEERING	05-Nov-12 A	01-May-17	▶ 01-May-17																											
PROCUREMENT (MATERIALS & FABRICATION)	01-Oct-14 A	01-May-17	▶ 01-May-17																											
CONSTRUCTION	24-Feb-14 A	07-Jul-17	▶ 07-Jul-17																											
COMMISSIONING	13-Jun-17	17-Jul-17	▶ 17-Jul-17																											
13000 (X20001/2) Overhead HVDC Transmission Line from Point Aconi to Woodbine (NS)	02-Oct-12 A	07-Jun-17	▶ 07-Jun-17																											
ENGINEERING	02-Oct-12 A	01-May-17	▶ 01-May-17																											
PROCUREMENT (MATERIALS & FABRICATION)	02-Feb-15 A	01-May-17	▶ 01-May-17																											
CONSTRUCTION	17-Feb-14 A	01-Jun-17	▶ 01-Jun-17																											
COMMISSIONING	31-May-17	07-Jun-17	▶ 07-Jun-17																											
14100 (E00502) Grounding line from Bottom Brook to Indian Head (NL)	05-Nov-12 A	30-Sep-16 A	▶ 30-Sep-16 A																											
ENGINEERING	05-Nov-12 A	30-Sep-16 A	▶ 30-Sep-16 A																											
PROCUREMENT (MATERIALS & FABRICATION)	02-Mar-15 A	25-Nov-15 A	▶ 25-Nov-15 A																											
CONSTRUCTION	17-Mar-14 A	30-Sep-16 A	▶ 30-Sep-16 A																											
COMMISSIONING	19-Sep-16 A	30-Sep-16 A	▶ 30-Sep-16 A																											
14200 (E00501) Grounding line - Woodbine to Big Lorraine (NS)	02-Oct-12 A	30-Sep-16 A	▶ 30-Sep-16 A																											
ENGINEERING	02-Oct-12 A	30-Sep-16 A	▶ 30-Sep-16 A																											
PROCUREMENT (MATERIALS & FABRICATION)	18-Mar-15 A	22-May-15 A	▶ 22-May-15 A																											
CONSTRUCTION	23-Feb-15 A	29-Sep-16 A	▶ 29-Sep-16 A																											

— Primary Baseline
 Remaining Work
 ◆ Milestone
 Actual Work
 ◆ Baseline Milestone
 ▼ Summary



— Primary Baseline
 Remaining Work
 ◆ Milestone
 ◆ Milestone
 Actual Work
 ◆ Baseline Milestone
 ▼ Summary

Activity Name	Start	Finish	2014				2015				2016				2017				2018				2019			
			Q1	Q2	Q3	Q4	Q1	Q2	Q3	Q4	Q1	Q2	Q3	Q4	Q1	Q2	Q3	Q4	Q1	Q2	Q3	Q4	Q1	Q2	Q3	Q4
COMMISSIONING	13-Feb-17 A	13-Feb-17 A																								
CONVERTER STATIONS.	01-Oct-12 A	14-Aug-17																								
41000 (301NL) Bottom Brook Converter Station (NL)	01-Oct-12 A	14-Aug-17																								
ENGINEERING	01-Oct-12 A	01-May-17																								
PROCUREMENT (MATERIALS & FABRICATION)	03-Nov-14 A	14-Aug-17																								
CONSTRUCTION	29-Sep-14 A	31-Jul-17																								
COMMISSIONING	25-Apr-17 A	10-Aug-17																								
42000 (301NS) Woodbine Converter Station (NS)	01-Oct-12 A	14-Aug-17																								
ENGINEERING	01-Oct-12 A	01-May-17																								
PROCUREMENT (MATERIALS & FABRICATION)	08-Jul-15 A	14-Aug-17																								
CONSTRUCTION	11-Sep-14 A	19-Jul-17																								
COMMISSIONING	01-May-17	04-Aug-17																								
OVERHEAD TO UNDERGROUND TRANSITION SITES.	08-Oct-12 A	29-Sep-17																								
51000 (701NL) Overhead to Underground Transition Compound at Cape Ray (NL)	28-Jan-13 A	03-Aug-17																								
ENGINEERING	28-Jan-13 A	03-Apr-17 A																								
PROCUREMENT (MATERIALS & FABRICATION)	08-Feb-16 A	09-Jun-17																								
CONSTRUCTION	10-Nov-15 A	23-Jun-17																								
COMMISSIONING	12-Jun-17	03-Aug-17																								
52000 (701NS) Overhead to Underground Transition Compound at Point Aconi (NS)	08-Oct-12 A	27-Jul-17																								
ENGINEERING	08-Oct-12 A	30-Mar-17 A																								
PROCUREMENT (MATERIALS & FABRICATION)	08-Feb-16 A	09-Jun-17																								
CONSTRUCTION	04-Feb-14 A	25-May-17																								
COMMISSIONING	16-Jun-17	27-Jul-17																								
53000 (702NS) Woodbine Transition Compound (NS)	10-Mar-14 A	07-Sep-17																								
ENGINEERING	10-Mar-14 A	31-Mar-17 A																								
PROCUREMENT (MATERIALS & FABRICATION)	01-May-17	07-Sep-17																								
CONSTRUCTION	09-Sep-14 A	19-Jul-17																								
COMMISSIONING	01-May-17	14-Jul-17																								
55000 Telecommunication Links	01-Jan-13 A	29-Sep-17																								
ENGINEERING	01-Jan-13 A	31-Oct-14 A																								
PROCUREMENT (MATERIALS & FABRICATION)	01-Apr-16 A	01-May-17																								
CONSTRUCTION	01-May-17	25-Sep-17																								
COMMISSIONING	26-Sep-17	29-Sep-17																								
56000 Control Center Data Link	29-Nov-13 A	01-May-17																								
ENGINEERING	29-Nov-13 A	31-May-16 A																								
PROCUREMENT (MATERIALS & FABRICATION)	19-Jan-16 A	31-May-16 A																								
CONSTRUCTION	19-Jan-16 A	01-May-17																								
COMMISSIONING	01-May-17	01-May-17																								
58000 Improvement of Access Road Infrastructure.	02-May-13 A	28-Aug-17																								
ENGINEERING	02-May-13 A	15-Oct-13 A																								
CONSTRUCTION	14-Oct-14 A	26-Jan-16 A																								
COMMISSIONING	27-Jan-16 A	02-Feb-16 A																								
OPERATIONS	08-Feb-16 A	28-Aug-17																								
SUBMARINE CABLE AND TERMINATIONS.	03-Sep-12 A	14-Nov-17																								
61000 Submarine Cable, Land Cable, and Terminations	30-Jan-14 A	14-Nov-17																								

— Primary Baseline
 — Remaining Work
 ◆ Milestone
 ◆ Milestone
— Actual Work
 ◆ Baseline Milestone
 ▼ Summary

Activity Name	Start	Finish	2014				2015				2016				2017				2018				2019			
			Q1	Q2	Q3	Q4	Q1	Q2	Q3	Q4	Q1	Q2	Q3	Q4	Q1	Q2	Q3	Q4	Q1	Q2	Q3	Q4	Q1	Q2	Q3	Q4
MILESTONES	30-Jan-14 A	14-Nov-17	▼ 14-Nov-17																							
ADMINISTRATION & QHSER	30-Jan-14 A	23-Oct-17	▼ 23-Oct-17																							
ENGINEERING	30-Jan-14 A	28-Oct-17	▼ 28-Oct-17																							
PROCUREMENT	11-Aug-14 A	29-Jun-17	▼ 29-Jun-17																							
MANUFACTURING	17-Jun-15 A	02-Mar-17 A	▼ 02-Mar-17 A																							
TRANSPORT	27-Sep-15 A	13-May-17	▼ 13-May-17																							
CONSTRUCTION INSTALLATION & PROTECTION	29-Jun-15 A	18-Aug-17	▼ 18-Aug-17																							
PRECOMMISSIONING	16-Jun-17	15-Sep-17	▼ 15-Sep-17																							
62000 Landfall HDD	03-Sep-12 A	27-Aug-16 A	▼ 27-Aug-16 A																							
HDD ENGINEERING	03-Sep-12 A	10-Sep-15 A	▼ 10-Sep-15 A																							
62200 Landfall HDD Cape Ray, NL	15-Apr-14 A	06-Jun-16 A	▼ 06-Jun-16 A																							
62100 Landfall HDD Point Aconi, NS	04-Feb-14 A	27-Aug-16 A	▼ 27-Aug-16 A																							
63000 Marine Consultancy Services	22-Mar-13 A	01-May-17	▼ 01-May-17																							
Storage Table Reel Foundation	05-Dec-16 A	30-Mar-17 A	▼ 30-Mar-17 A																							
63100 Marine Warranty Survey Services	01-May-17	01-May-17	▼ 01-May-17																							
63200 Marine 3rd Party Engineering Verification Services	01-May-17	01-May-17	▼ 01-May-17																							
63300 Engineering Studies (finalize cable protection studies, design rock berm, etc.)	22-Mar-13 A	04-Apr-14 A	▼ 04-Apr-14 A																							
20000 NSPI	07-Feb-14 A	31-Aug-17	▼ 31-Aug-17																							
20100 NSPI - L6513 - Onslow to Springhill Rebuild	07-Feb-14 A	24-May-17	▼ 24-May-17																							
ENGINEERING	07-Feb-14 A	31-Aug-16 A	▼ 31-Aug-16 A																							
PROCUREMENT (MATERIALS & FABRICATIONS)	01-May-17	01-May-17	▼ 01-May-17																							
CONSTRUCTION	01-May-17	01-May-17	▼ 01-May-17																							
COMMISSIONING	01-May-17	24-May-17	▼ 24-May-17																							
20200 NSPI - Strait of Canso Crossing/Separate L-8004/L-7005	17-Mar-14 A	31-Aug-17	▼ 31-Aug-17																							
ENGINEERING	17-Mar-14 A	30-Nov-16 A	▼ 30-Nov-16 A																							
PROCUREMENT (MATERIALS & FABRICATIONS)	01-May-17	01-May-17	▼ 01-May-17																							
CONSTRUCTION	01-May-17	30-Jun-17	▼ 30-Jun-17																							
COMMISSIONING	04-Jul-17	31-Aug-17	▼ 31-Aug-17																							
20300 NSPI - L-6511/L-7019	01-Oct-14 A	01-Oct-15 A	▼ 01-Oct-15 A																							
ENGINEERING	01-Oct-14 A	30-Apr-15 A	▼ 30-Apr-15 A																							
PROCUREMENT (MATERIALS & FABRICATIONS)	01-Apr-15 A	31-Aug-15 A	▼ 31-Aug-15 A																							
CONSTRUCTION	01-Oct-15 A	01-Oct-15 A	▼ 01-Oct-15 A																							
COMMISSIONING	01-Oct-15 A	01-Oct-15 A	▼ 01-Oct-15 A																							
20400 NSPI - L-8001 & L-8002 Node Swap at 67N-Onslow (Onslow to NB, Onslow to Lakeside)	10-Feb-14 A	18-Dec-15 A	▼ 18-Dec-15 A																							
ENGINEERING	10-Feb-14 A	31-Mar-15 A	▼ 31-Mar-15 A																							
PROCUREMENT (MATERIALS & FABRICATIONS)	05-Jan-15 A	24-Apr-15 A	▼ 24-Apr-15 A																							
CONSTRUCTION	01-Dec-14 A	16-Dec-15 A	▼ 16-Dec-15 A																							
COMMISSIONING	18-Dec-15 A	18-Dec-15 A	▼ 18-Dec-15 A																							
20600 NSPI - Transmission Line (7015 pinch Points)(E12-50)(overlap with 13000)	11-Mar-14 A	30-Jan-15 A	▼ 30-Jan-15 A																							
ENGINEERING	11-Mar-14 A	30-Sep-14 A	▼ 30-Sep-14 A																							
PROCUREMENT (MATERIALS & FABRICATIONS)	14-Apr-14 A	31-Oct-14 A	▼ 31-Oct-14 A																							
CONSTRUCTION	16-Sep-14 A	30-Jan-15 A	▼ 30-Jan-15 A																							
COMMISSIONING	29-Jan-15 A	30-Jan-15 A	▼ 30-Jan-15 A																							
20700 NSPI - SPS Modification	15-Sep-15 A	30-Jun-17	▼ 30-Jun-17																							
ENGINEERING	15-Sep-15 A	30-Jun-16 A	▼ 30-Jun-16 A																							

— Primary Baseline
 Remaining Work
 ◆ Milestone
 ◆ Baseline Milestone
 ▼ Summary

Activity Name	Start	Finish	2014				2015				2016				2017				2018				2019			
			Q1	Q2	Q3	Q4	Q1	Q2	Q3	Q4	Q1	Q2	Q3	Q4	Q1	Q2	Q3	Q4	Q1	Q2	Q3	Q4	Q1	Q2	Q3	Q4
PROCUREMENT (MATERIALS & FABRICATIONS)	01-May-17	01-May-17																								
CONSTRUCTION	01-May-17	31-May-17																								
COMMISSIONING	30-Jun-17	30-Jun-17																								
OWNER'S SCHEDULE.	01-Mar-11 A	29-Sep-17																								
90100 Project Management	01-Mar-11 A	29-Sep-17																								
ENL Finance	02-Jan-14 A	30-Apr-14 A																								
DG3 Deliverables	21-Jan-13 A	26-May-14 A																								
Project Controls	01-Mar-11 A	29-Sep-17																								
Integrated Commission Planning	22-May-13 A	21-May-14 A																								
HS and S Program	04-Jun-12 A	27-Sep-13 A																								
Quality Management Program	23-Sep-13 A	29-Sep-17																								
Risk Assessments	09-Sep-13 A	04-May-17																								
Purchasing (Contracts)	15-Mar-11 A	02-Jun-17																								
Marine EPC 1 (E11-18)	15-Mar-11 A	30-Jan-14 A																								
Marine	15-Jun-12 A	27-Apr-16 A																								
Converter Stations (EPC2) E12-74	09-Oct-12 A	30-Jun-14 A																								
Land Assets	18-Jun-12 A	26-Sep-16 A																								
Environment	22-Jun-11 A	02-Jun-17																								
Project Control Office	09-Jul-12 A	16-Jul-14 A																								
Land Acquisition Services	29-Oct-12 A	22-Feb-13 A																								
90200 External Services	04-Jan-12 A	29-Jun-17																								
Legal Services	25-Jun-12 A	27-Jun-17																								
Insurance Services	03-Jul-12 A	10-Dec-14 A																								
Regulatory (UARB) Affairs	02-Jan-13 A	24-Jun-14 A																								
Independent Project Reviews	08-Jul-13 A	29-Jun-17																								
Human Resources, Diversity and Gender Equity and Benefits Strategy	01-Aug-12 A	30-Sep-14 A																								
CBoD/FBoD Hatch	04-Jan-12 A	22-Jan-13 A																								
93000 Environmental	02-Apr-12 A	27-Sep-17																								
EA Approval	11-Jan-13 A	09-Sep-13 A																								
Environmental Studies	02-Apr-12 A	27-Sep-17																								
Permits	14-Jan-13 A	22-Sep-17																								
Environmental Protocol Documents	01-Aug-13 A	01-May-17																								
Aboriginal Relations	11-Jun-12 A	01-May-17																								
Other Stakeholder Relations	28-Jan-13 A	01-May-17																								
Post EA Environmental Monitoring Program	01-Jun-13 A	18-Aug-17																								
Environmental Program 14001	31-Jan-13 A	01-May-17																								
94000 Land Acquisition	15-Jul-12 A	31-Dec-15 A																								
90500 Other NLH System Upgrades	31-Aug-12 A	13-Sep-17																								
Engineering (TL201, Bay D'Espoir, Upper Salmon)	31-Aug-12 A	14-Aug-13 A																								
Procurement (Materials & Fabrication)	01-May-17	01-May-17																								
Construction	03-May-17	01-Sep-17																								
Commissioning	03-May-17	13-Sep-17																								
Dynamic Commissioning (90100)	14-Jul-17	02-Oct-17																								
System Test Preparation Activities	14-Jul-17	19-Jul-17																								
HV Energization - Woodbine (&Bottom Brook) Pole1	20-Jul-17	21-Jul-17																								

— Primary Baseline
 ■ Remaining Work
 ◆ Milestone
 ◆ Baseline Milestone
 ▼ Summary

Activity Name	Start	Finish	2014				2015				2016				2017				2018				2019			
			Q1	Q2	Q3	Q4	Q1	Q2	Q3	Q4	Q1	Q2	Q3	Q4	Q1	Q2	Q3	Q4	Q1	Q2	Q3	Q4	Q1	Q2	Q3	Q4
Terminal Operation - Woodbine (& Bottom Brook) Pole 1	24-Jul-17	02-Aug-17																								
HV Energization - Woodbine (& Bottom Brook) Pole 2	03-Aug-17	04-Aug-17																								
Terminal Operation - Woodbine (& Bottom Brook) Pole 2	07-Aug-17	14-Aug-17																								
Open Line / DC Switchyard Test - Pole 1	15-Aug-17	17-Aug-17																								
Monopolar Operation - Pole 1	18-Aug-17	24-Aug-17																								
Open Line / DC Switchyard Test - Pole 2	25-Aug-17	30-Aug-17																								
Monopolar Operation - Pole 2	31-Aug-17	08-Sep-17																								
Bipolar Operation	11-Sep-17	29-Sep-17																								
Performance Testing	29-Sep-17	02-Oct-17																								

- ▼ 02-Aug-17
- ▼ 04-Aug-17
- ▼ 14-Aug-17
- ▼ 17-Aug-17
- ▼ 24-Aug-17
- ▼ 30-Aug-17
- ▼ 08-Sep-17
- ▼ 29-Sep-17
- ▼ 02-Oct-17

— Primary Baseline
 — Remaining Work
 ◆ Milestone
 ◆ Milestone
█ Actual Work
 ◆ Baseline Milestone
 ▼ Summary

SCHEDULE "Q"

DRAW CONFIRMATION CERTIFICATE BY INDEPENDENT ENGINEER

ML PROJECT FINANCING

This Draw Confirmation Certificate is provided by Argirov Engineering Inc. (the "Independent Engineer") to The Toronto-Dominion Bank (the "Collateral Agent") in connection with the credit agreement dated February 24, 2014, between NSP Maritime Link Incorporated (the "Borrower"), Maritime Link Financing Trust (the "Lender") and the Collateral Agent (said agreement, as same may be amended, supplemented or restated from time to time, is hereinafter referred to as the "ML Credit Agreement"). Capitalized terms used in this Draw Confirmation Certificate not defined herein shall have the meanings assigned to them in Exhibit A of the ML Credit Agreement.

The Independent Engineer has (i) discussed matters believed pertinent to this Draw Confirmation Certificate with the Borrower and any relevant Material Project Participants, (ii) made such other inquiries as we have determined appropriate and (iii) reviewed:

- (a) the Construction Report dated April 20, 2016 (the "Construction Report"); and
- (b) the Borrower's funding request dated April 24, 2016 (the "Funding Request").

On the basis of the foregoing limited review procedures and on the understanding and assumption that the factual information contained in the Construction Report and Funding Request is true, correct and complete in all material respects, the Independent Engineer makes the following statements in favour of the Collateral Agent and to the best of its knowledge, information and belief, as of the date hereof that:

1. Construction of the Project is progressing in a satisfactory manner and in accordance with the terms of the applicable Material Project Documents with the following exceptions:

NO EXCEPTIONS NOTED

2. All payments to the Material Project Participants to be paid with the proceeds of the ML Construction Loan (including any payments using advances from the Working Capital Reserve Account during the period from the last Draw Confirmation Certificate to this Draw Confirmation Certificate) requested to be made pursuant to the Funding Request are allowed under the payment terms of the applicable Material Project Documents and the ML Credit Agreement as to the advance requirements of Section 7.3, with the following exceptions:

NO EXCEPTIONS NOTED

3. Assuming the Borrower exercises proper engineering and construction management throughout the remainder of the Project, we have no reason to believe that the Commissioning Date will not occur prior to the Date Certain, or that the total Project Costs will exceed [\$1,577,354,028] with the following exceptions:

NO EXCEPTIONS NOTED

This Draw Confirmation Certificate is solely for the information and assistance of the Collateral Agent, the Lender and Canada in connection with the Funding Request and shall not be used, circulated or relied upon for any other purpose or by any other party.

Dated: April 26, 2017

Argirov Engineering Inc.

A handwritten signature in blue ink, appearing to be 'M. Argirov', written over a horizontal line.

By: _____

Title: IE Team Leader

SCHEDULE "Q"

DRAW CONFIRMATION CERTIFICATE BY INDEPENDENT ENGINEER

ML PROJECT FINANCING

This Draw Confirmation Certificate is provided by Argirov Engineering Inc. (the "Independent Engineer") to The Toronto-Dominion Bank (the "Collateral Agent") in connection with the credit agreement dated February 24, 2014, between NSP Maritime Link Incorporated (the "Borrower"), Maritime Link Financing Trust (the "Lender") and the Collateral Agent (said agreement, as same may be amended, supplemented or restated from time to time, is hereinafter referred to as the "ML Credit Agreement"). Capitalized terms used in this Draw Confirmation Certificate not defined herein shall have the meanings assigned to them in Exhibit A of the ML Credit Agreement.

The Independent Engineer has (i) discussed matters believed pertinent to this Draw Confirmation Certificate with the Borrower and any relevant Material Project Participants, (ii) made such other inquiries as we have determined appropriate and (iii) reviewed:

- (a) the Construction Report dated May 23, 2017 (the "Construction Report"); and
- (b) the Borrower's funding request dated May 24, 2017 (the "Funding Request").

On the basis of the foregoing limited review procedures and on the understanding and assumption that the factual information contained in the Construction Report and Funding Request is true, correct and complete in all material respects, the Independent Engineer makes the following statements in favour of the Collateral Agent and to the best of its knowledge, information and belief, as of the date hereof that:

1. Construction of the Project is progressing in a satisfactory manner and in accordance with the terms of the applicable Material Project Documents with the following exceptions:

NO EXCEPTIONS NOTED

2. All payments to the Material Project Participants to be paid with the proceeds of the ML Construction Loan (including any payments using advances from the Working Capital Reserve Account during the period from the last Draw Confirmation Certificate to this Draw Confirmation Certificate) requested to be made pursuant to the Funding Request are allowed under the payment terms of the applicable Material Project Documents and the ML Credit Agreement as to the advance requirements of Section 7.3, with the following exceptions:

NO EXCEPTIONS NOTED

3. Assuming the Borrower exercises proper engineering and construction management throughout the remainder of the Project, we have no reason to believe that the Commissioning Date will not occur prior to the Date Certain, or that the total Project Costs will exceed [\$1,577,354,028] with the following exceptions:

NO EXCEPTIONS NOTED

This Draw Confirmation Certificate is solely for the information and assistance of the Collateral Agent, the Lender and Canada in connection with the Funding Request and shall not be used, circulated or relied upon for any other purpose or by any other party.

Dated: May 25, 2017

Argirov Engineering Inc.

A handwritten signature in blue ink, appearing to be 'M. Argirov', written over a horizontal line.

By: _____

Title: IE Team Leader

Operating Agreement Requirements Arising from the Formal Agreements

	Agreement	Parties	Description	Formal Agreement Source	Status
1.	Asset Interconnection Agreement (NL)	Emera, NLH	Interconnection of ML with the Island Interconnected System	ML-JDA, s. 2.1 (c)	Completed
2.	Multi-Party Pooling Agreement	Emera, NLH	NLH (SO) to have operational control of ML NLH AC Upgrades	ML-JDA, s. 2.1 (d)	Completed
3.	Transmission Operating Agreement (NL)	Emera, NLH	NLH (SO) to have operational control of ML NL HVdc Facilities	ML-JDA, s. 2.1 (e)	Completed
4.	Asset Interconnection Agreement (NS)	Emera, NSPI	Interconnection of ML with NS bulk electric transmission system	ML-JDA, s. 2.1 (f)(i)	Completed with exception of execution; expect execution in Q2, 2017.
5.	Transmission Operating Agreement (NS)	Emera, NSPI	NS SO to have general operational control of the ML	ML-JDA, s. 2.1 (f)(ii)	Completed with exception of execution; expect execution in Q2, 2017.
6.	ECA – Metering and Measuring Standards – Transmission Losses	NSPML, Nalcor	Metering and measuring standards used in the calculation of Transmission Losses	ECA, Schedule 3, s. 5	Completed
7.	Regulation Service Agreement	NSPML, Nalcor	Nalcor’s provision of the Regulation Service with respect to the Nova Scotia Block for the Initial Term	ECA, Schedule 5	Expect completion in 2017
8.	Metering and Measuring Standards – NS NTQ transmission losses	NSPML, Nalcor	Metering and measuring standards used in calculation of NS –NTQ Path Peak and Off-Peak Hour transmission losses	NSTUA, Schedule 3, s. 6	Completed
9.	NB Back-up Capacity Agreement	Bayside Power L.P, Nalcor	Emera’s provision of backup Capacity to NB to Nalcor until March 31, 2021	NBTUA, s. 2.1(d)	Expect completion in 2017
10.	IOA – ML Transmission Procedures	NSPI, NLH	Rules and practices applicable to administration of transmission service over the ML	IOA, Schedule D	Completed
11.	IOA – Reserve	NSPI, NLH	Sharing of energy and	IOA, Schedule A	Expect

	Sharing		reserves between the Parties to improve Reliability		completion in 2017
12.	IOA – Description of Interconnection Facilities	NSPI, NLH	Description of Interconnection Facilities for which each Party is responsible	IOA, Schedule B	Expect completion in 2017
13.	IOA – Functional Operating Relationship	NSPI, NLH	Various matters relating to operating relationship	IOA, Schedule C	Expect completion in 2017
14.	IOA – Operating Procedures	NSPI, NLH	IOC to develop “operating procedures”	IOA s.7.2 and s. 7.4(a)	Expect completion in 2017
15.	IOA – Schedule A1.0	NSPI, NLH	Parties to prepare a plan for NLH participation in Reliability Assessment Program (“RAP”)	IOA Schedule A1.0	Completed
16.	ML TSA – ML Scheduling Process	Emera and Nalcor	Scheduling process applicable to the provision of Firm Point-to-Point Transmission Service	MLTSAs, Schedule 2	Expect completion in 2017
17.	Amendments to Formal Agreements	Emera, Nalcor	Amendments to Formal Agreements required by Sanction Agreement	Sanction Agreement	Completed
18.	Energy Access Agreement	Emera, Nalcor	Commitments regarding access to market priced energy	Compliance Filing, Appendix A	Completed
19.	Balancing Service Agreement	Emera, Nalcor	Nalcor commitment to provide balancing services from generation sources in NL for 25 years.	Energy Access Agreement Term Sheet, s. 7(g) and Appendix 1	Completed
20.	Assignment of Transmission Rights under ML(E)TSA	Emera, Nalcor	Assignment of Transmission Rights	ML(E)TSA, s. 3.3 (h)	Expect completion in 2017
21.	Assignment of Energy Access Agreement	Emera, Nalcor, NSPI and NEM	Assignment/assumption of Nalcor’s rights and obligations to/by NEM	EAA s. 15.1 (a)	Expect completion in 2017
22.	Assignment of Nalcor Master Agreement (EAA Schedule 2)	Nalcor, NSPI and NEM	Assignment/assumption of Nalcor’s rights and obligations to/by NEM	Nalcor Master Agreement s. 10.5 (a)	Expect completion in 2017
23.	JOA-Joint Operating Committee (“JOC”)	Nalcor and NSPML	Establish/Operationalize JOC	JOA s.s. 3.1, 3.5	Completed
24.	NS Transmission Utilization Agreement	Nalcor and Emera	Status of Emera firm Point to Point Transmission Service	NSTUA s.s.2.2 (a)-(c)	Completed