

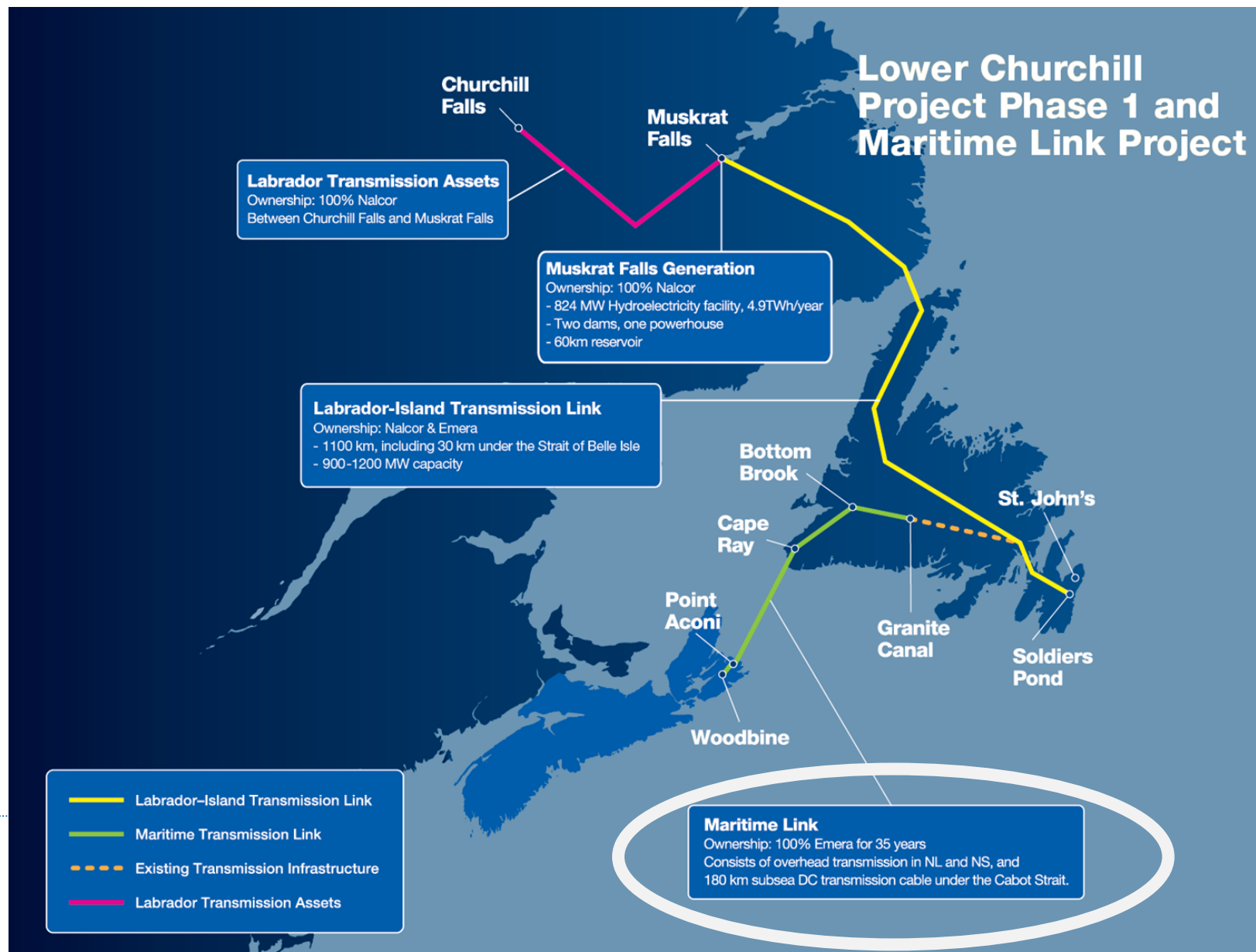


2023

Maritime Link Vegetation Management NL

energy everywhere.™

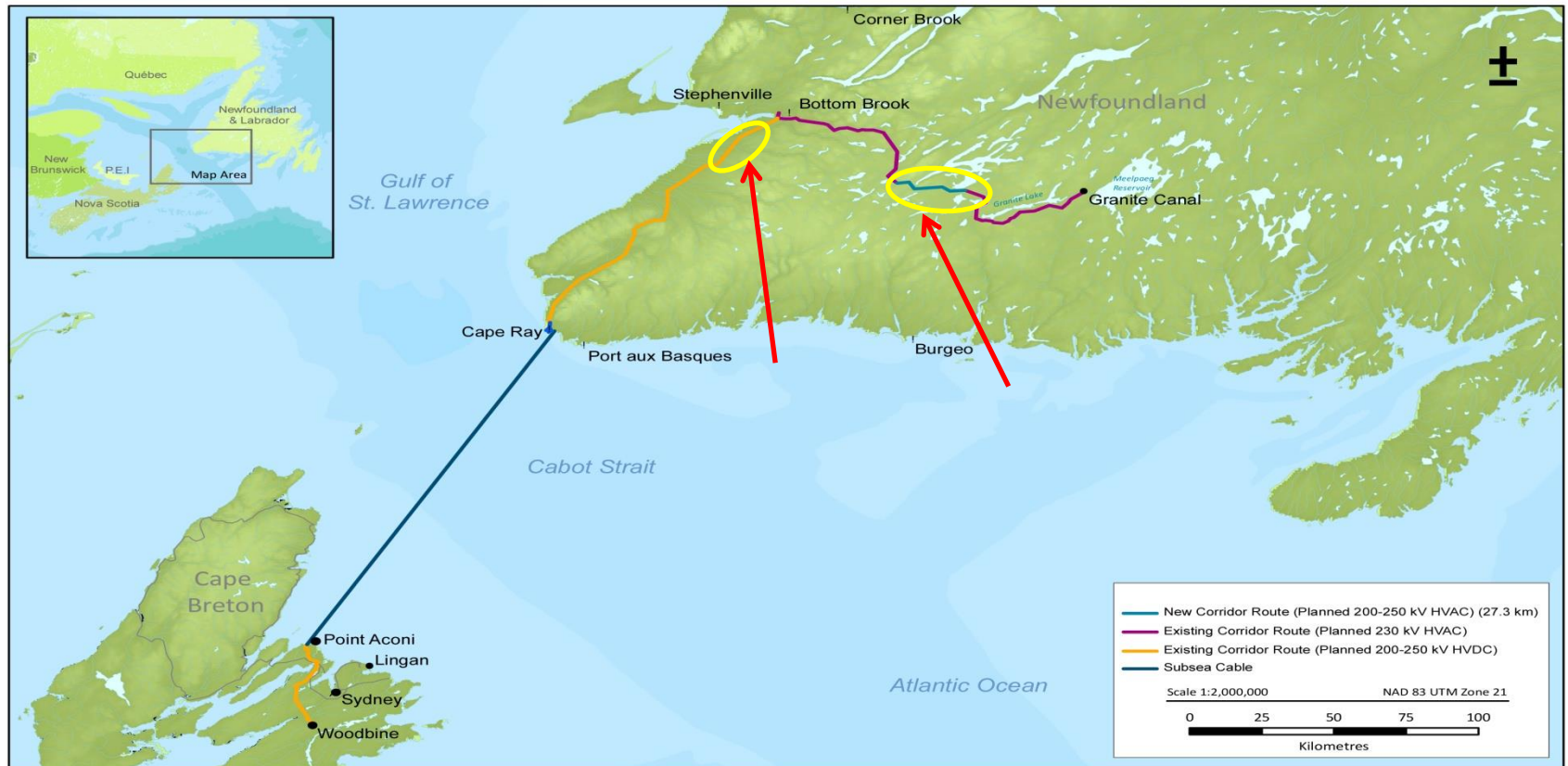
Lower Churchill Project Overview



Vegetation Management Program – Emera NL

- 2019
 - Focused on HVDC line along Trans Canada Highway from Bottom Brook to Cape Ray (142 Km line).
 - Mechanical Spray program on flat areas where tracked equipment could operate effectively.
 - Completed about 250 Ha or 1/3 of Right of Way area
- 2020
 - Focused on HVAC line along Burgeo highway. Area from Victoria River to Bottom Brook Station.
 - Completed over 200 Ha in this section. Combination of mechanical sprayers and back pack sprayers.
- 2021
 - Focused on Granite Canal to Victoria Control (Structure) and some sections along the Burgeo highway.
 - Completed a total of 247 (184/63) Ha in these sections using a combination of mechanical sprayers and back pack sprayers.
- 2022
 - Focused on higher slope sections of HVDC line along TCH from Bottom Brook to Cape Ray where mechanical spraying could not be performed in 2019 – Approximately 135 Ha. Was sprayed with back packs and 11.7 Ha was cut in sensitive areas.
 - Targeted sections of HVAC line along Burgeo highway from Bottom Brook to Victoria River. Approximately 44.6 Ha of spraying was performed using back pack sprayers where access trails were upgraded in 2021.
- 2023
 - Key area treated was the inaccessible right of way (ROW) between Victoria Control and Victoria River. This represents last area on the HVAC line to receive first application of vegetation management. Approximately 60 Ha for treatment.
 - Other areas of treatment are HVDC line Segments 4 to 7 (Approximately 70 Ha) and the grounding site.
 - Eastern end of Grounding line from Bottom Brook to Harry's river was not treated this year.

2023 Vegetation Management Program areas treated



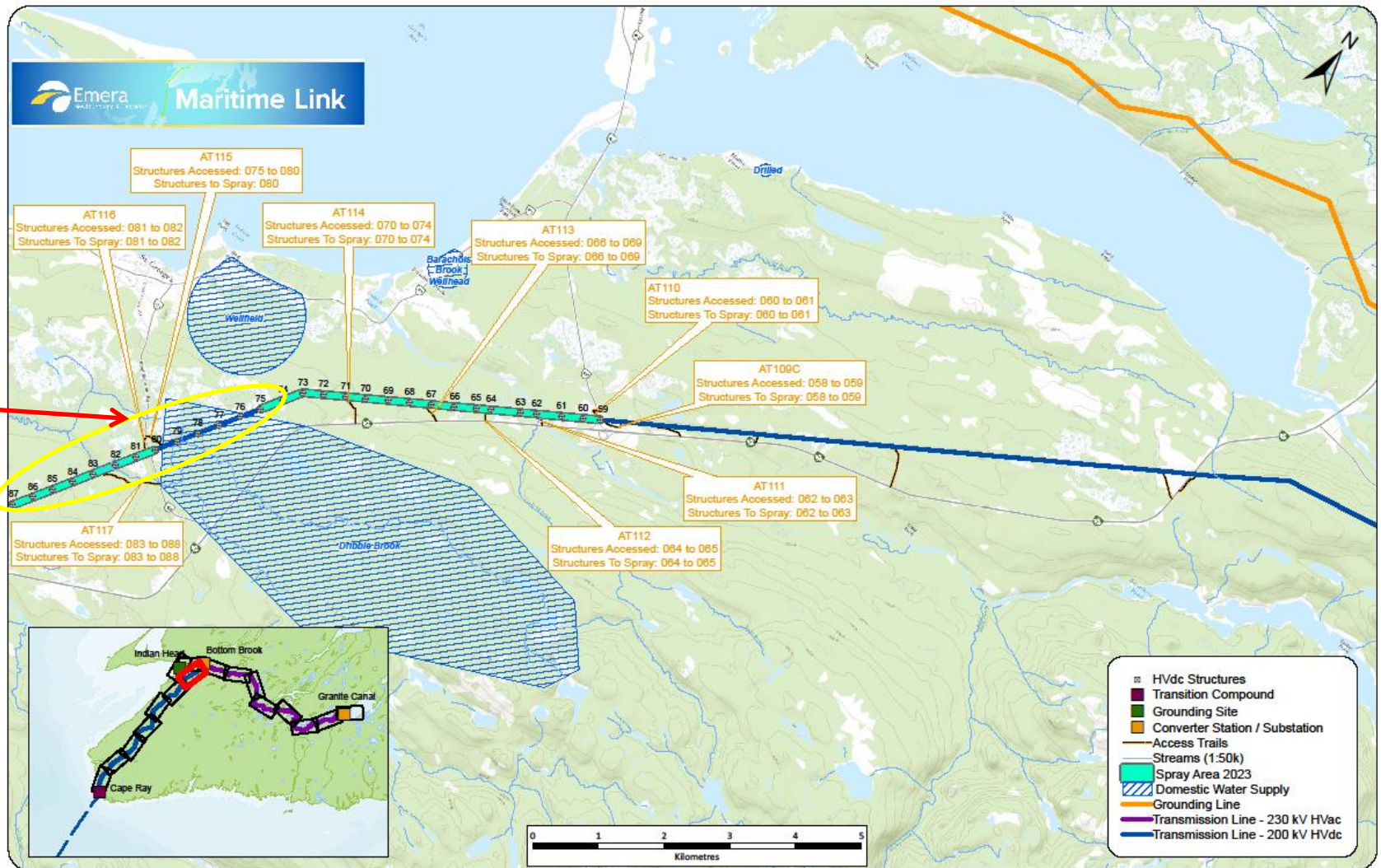
Date: 21 September 2012
Data Sources: Geogratis
National Atlas Framework 1: 2 Million

Maritime Link Project

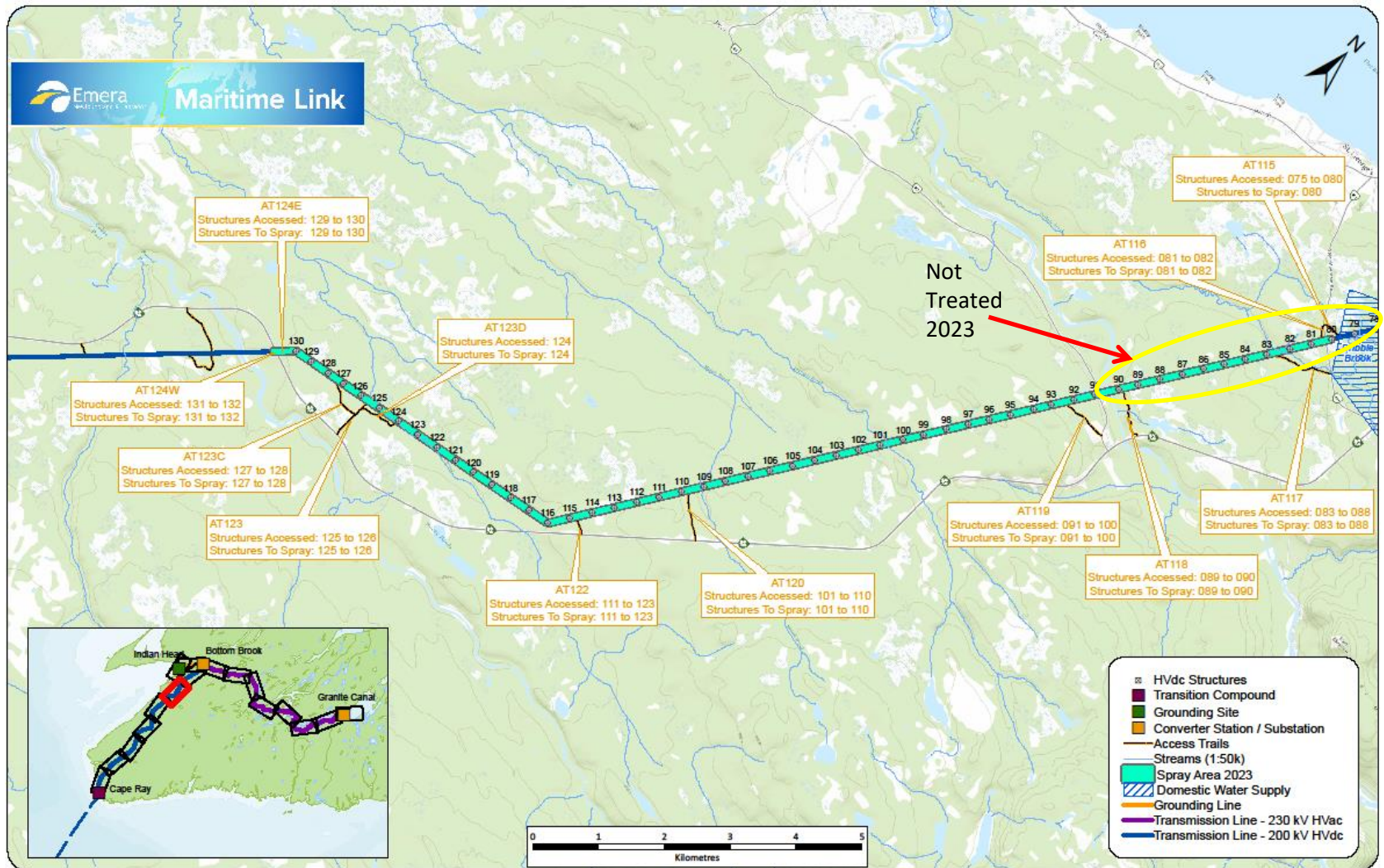
ENL_035

Map start – Bottom Brook - HVDC

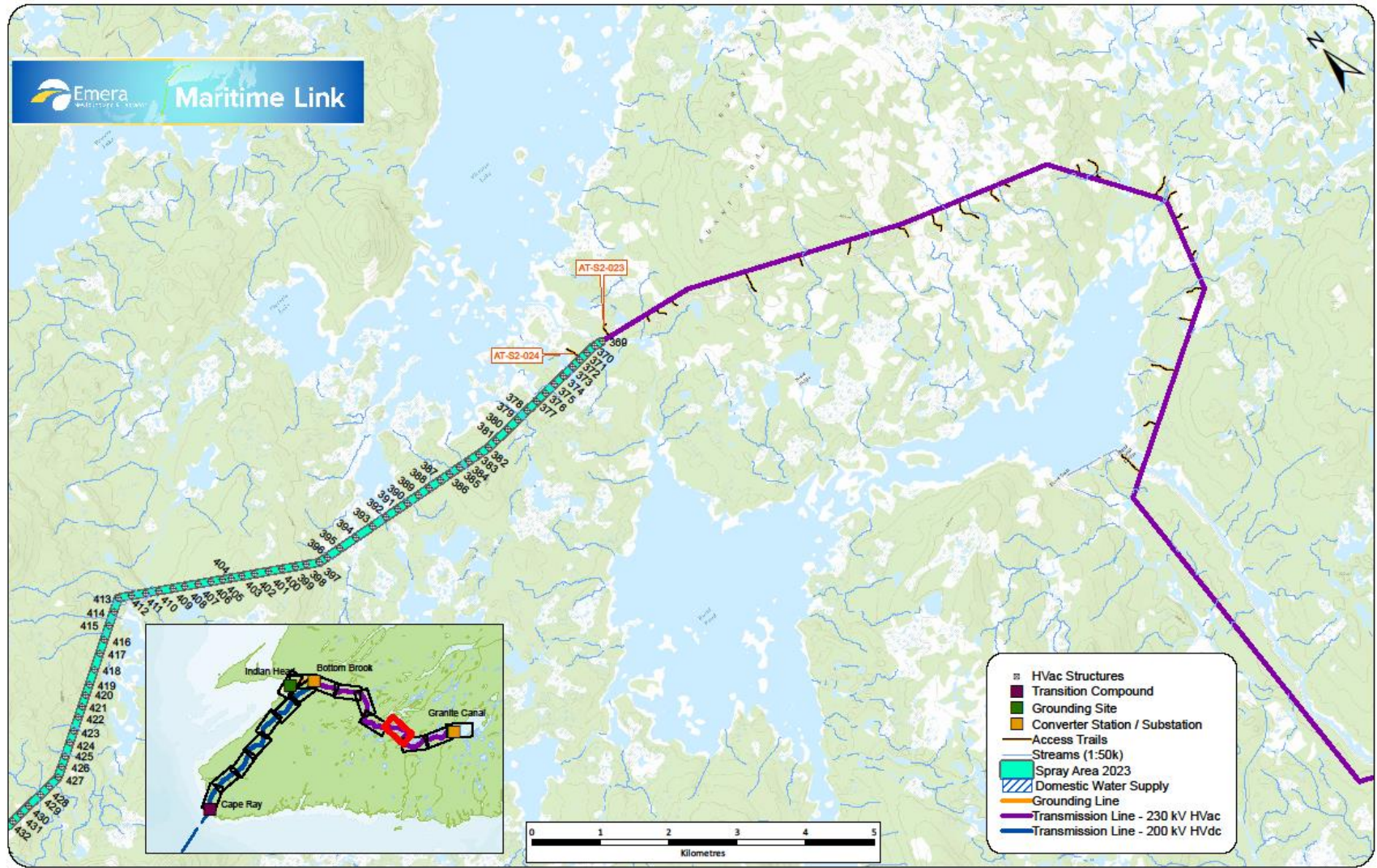
Not
Treated
2023



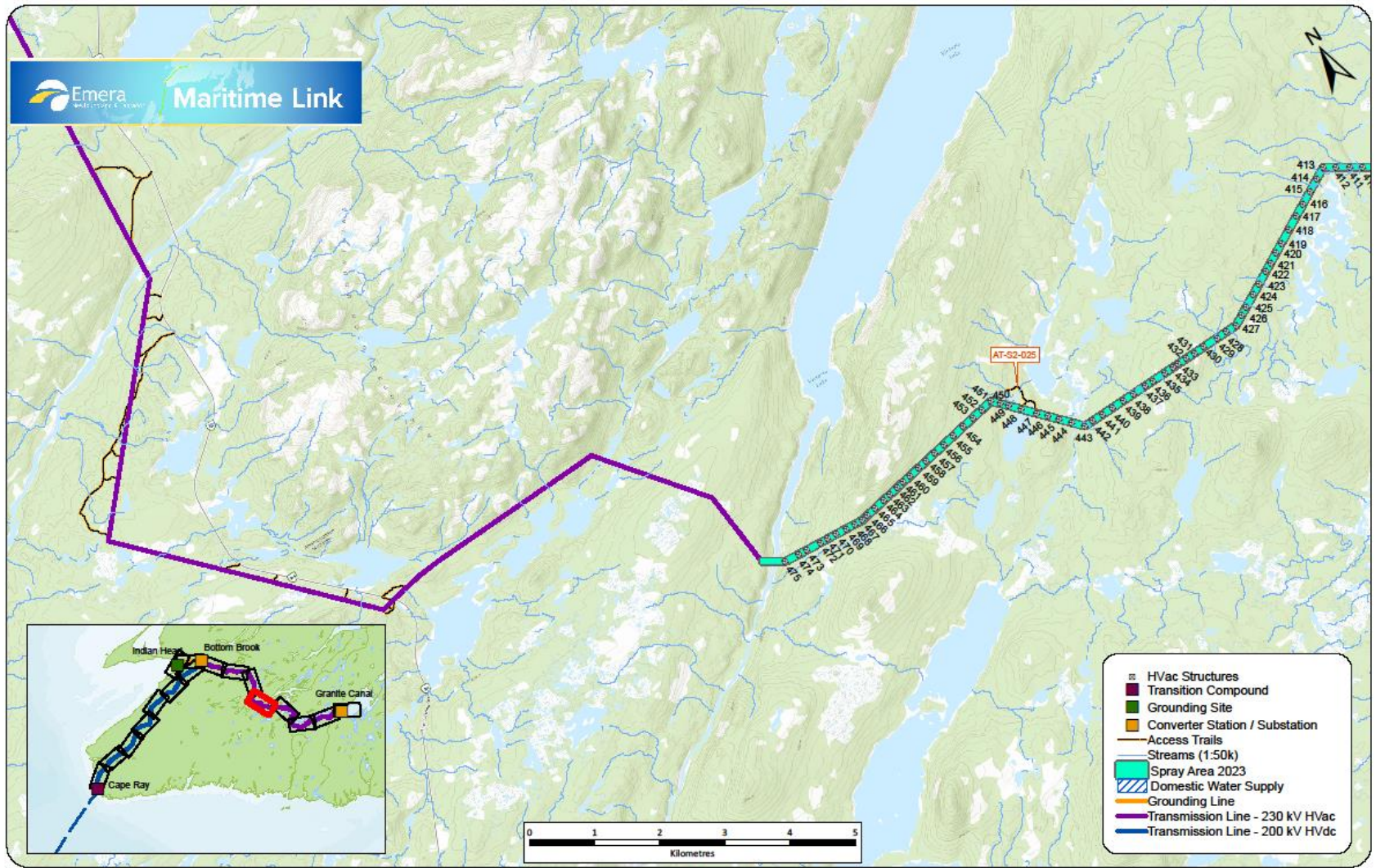
Map 2 - HVDC



Map start Victoria Control - HVAC



Map 2 – Victoria River - HVAC



HVDC Segments 8 to 17 – 2024 Program



Date: 21 September 2012
Data Sources: Geogratis
National Atlas Framework 1: 2 Million

Maritime Link Project

ENL_035

Treatment for 2023 – Manual (Back Pack Program)

Garlon-Clearview-Hasten Tank Mix

- Clearview is granular with liquid Garlon XRT and liquid Gateway (Spray Adjuvant). The Clearview was applied at 60g/ha, Garlon was applied at 3.2L/ha, and Gateway is applied at 0.2L/ha. The Garlon and Clearview do the work and the allows for better penetration/absorption of the herbicide into the plant.